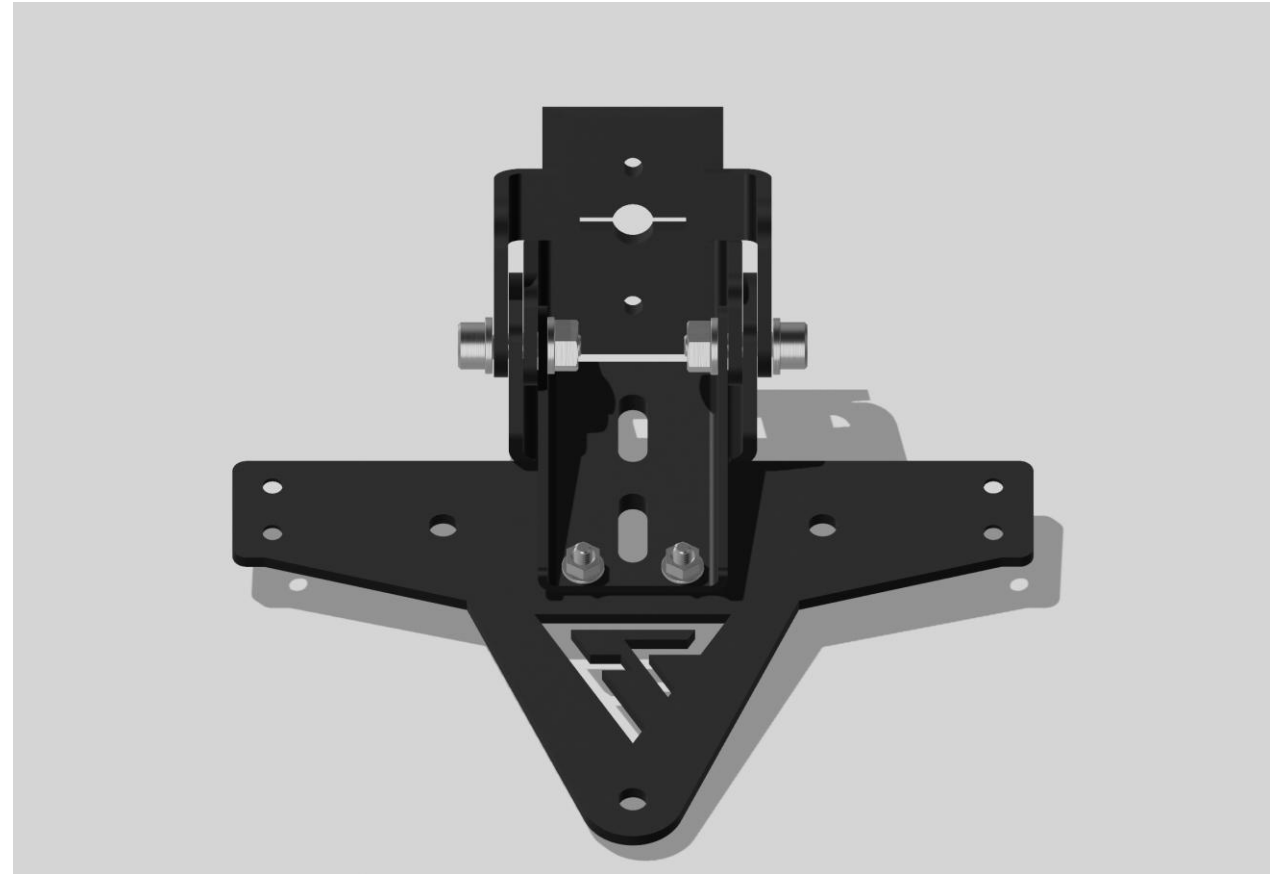




# **Foldable Holder V2.1**

## Assembly Instructions



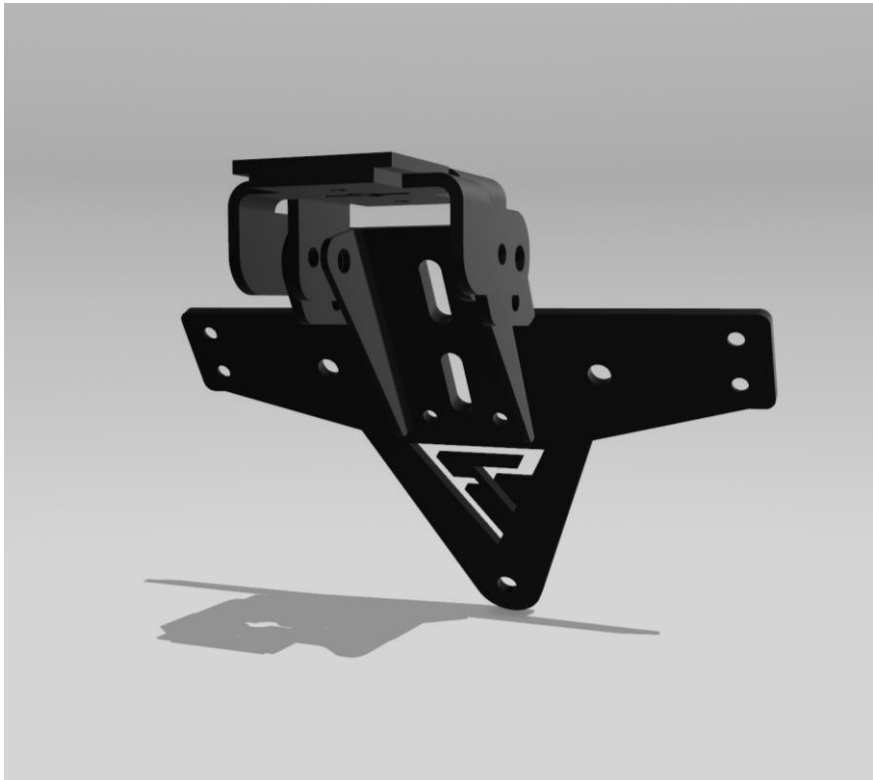


**Foldable Holder V2.1**  
Assembly Instructions

Step 1



Step 2

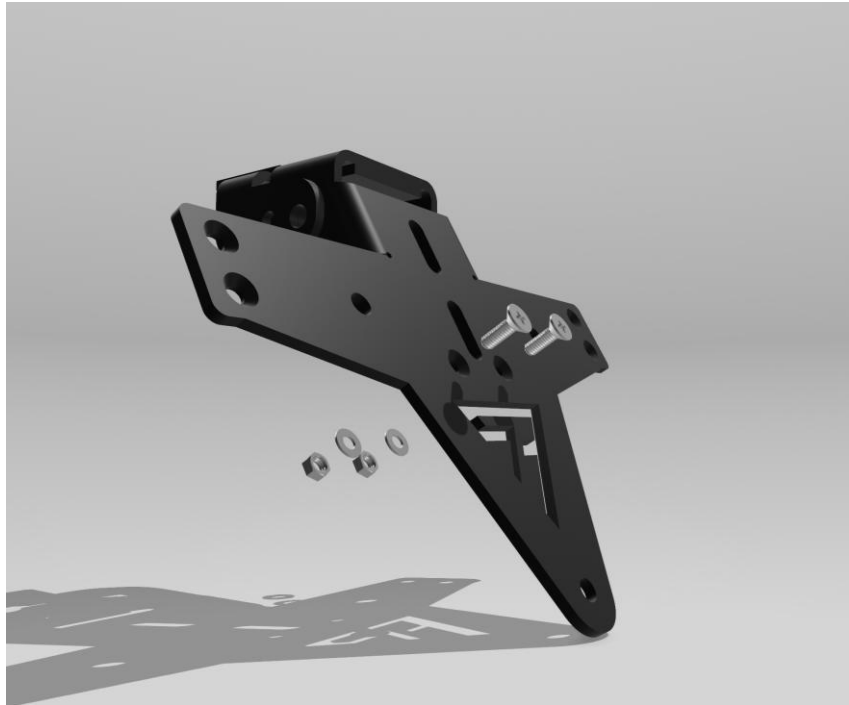


Insert the three parts of the Foldable Holder together in the correct order.

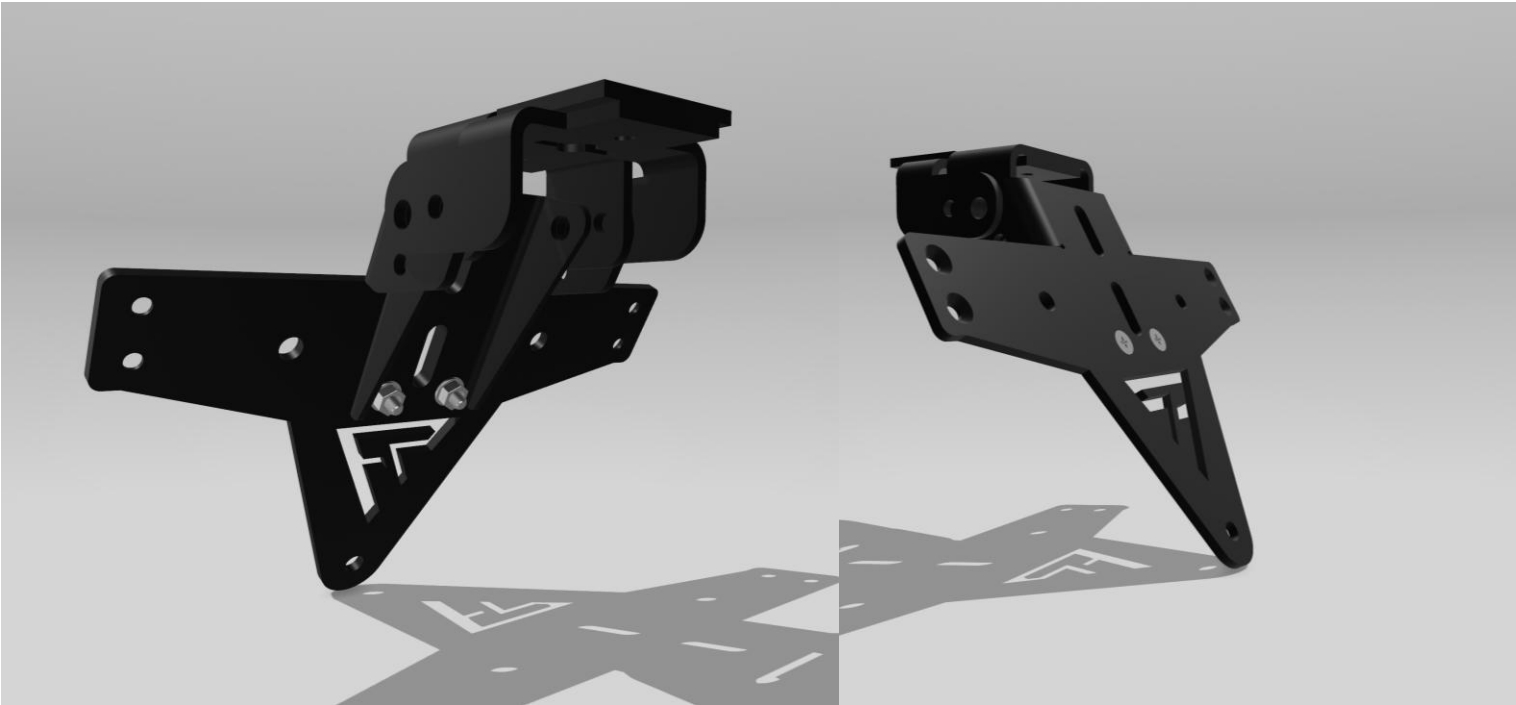


**Foldable Holder V2.1**  
Assembly Instructions

Step 3



Step 4



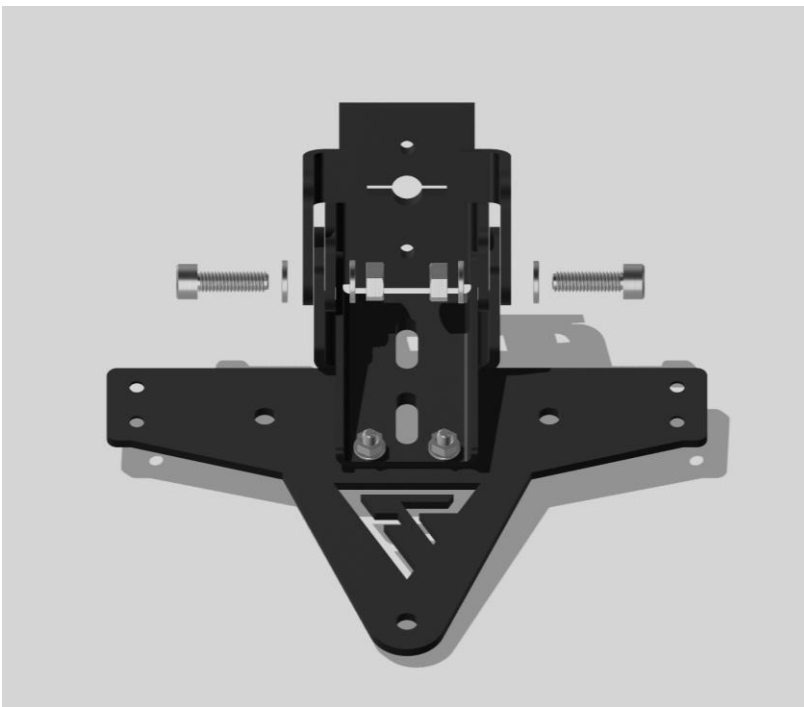
Tighten the included screws.  
M4x12



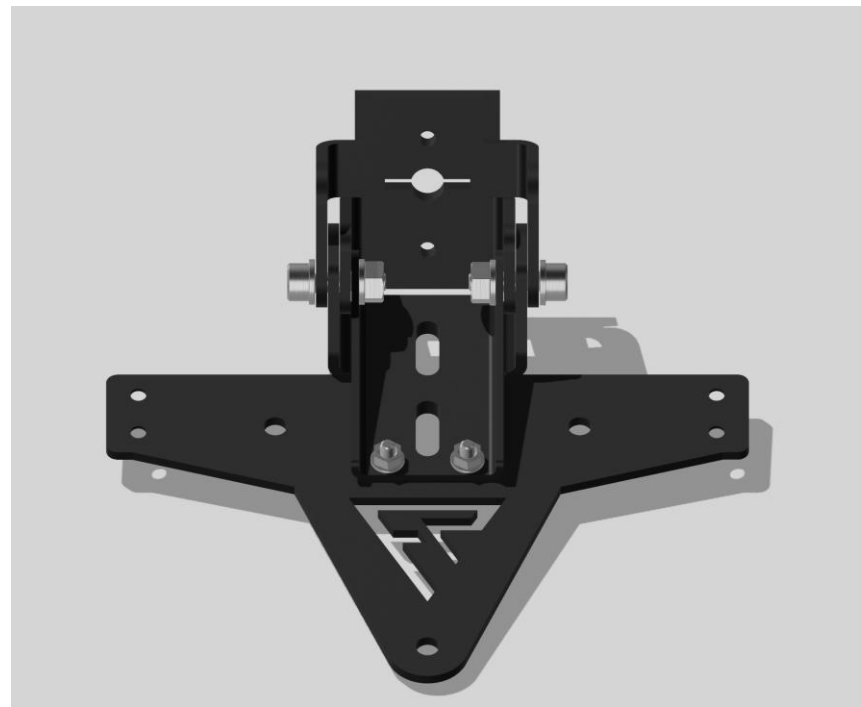
## Foldable Holder V2.1

Assembly Instructions

### Step 5



### Step 6



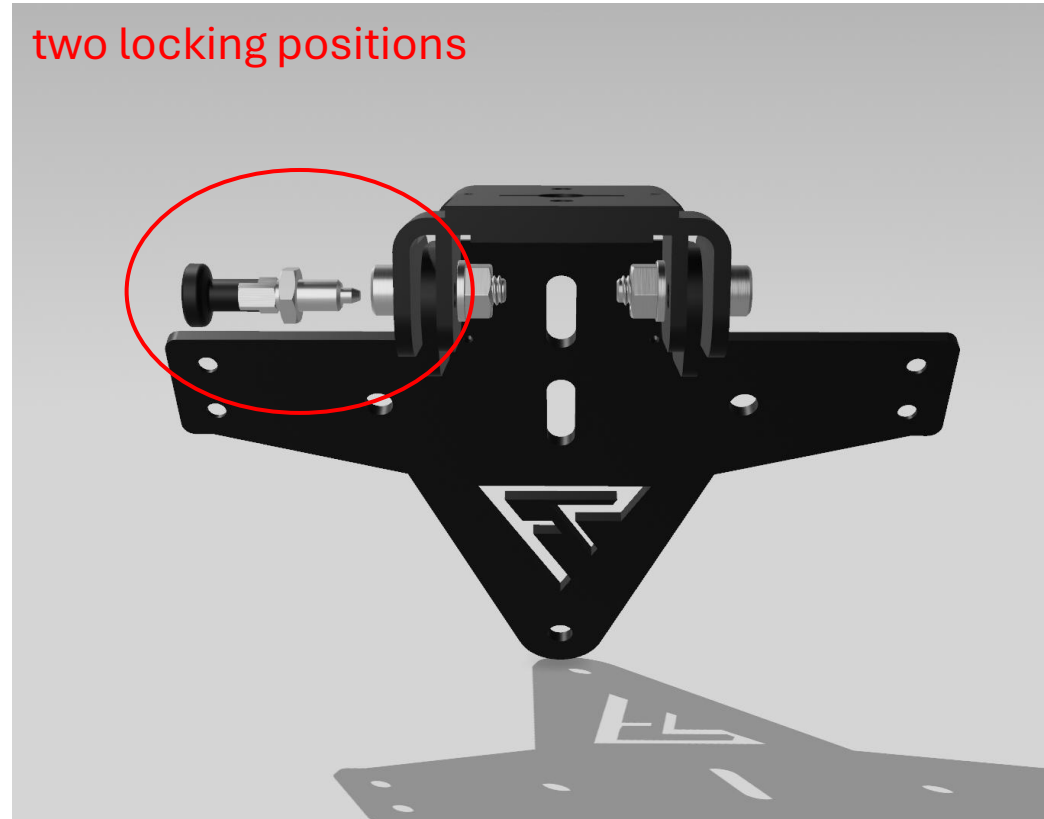
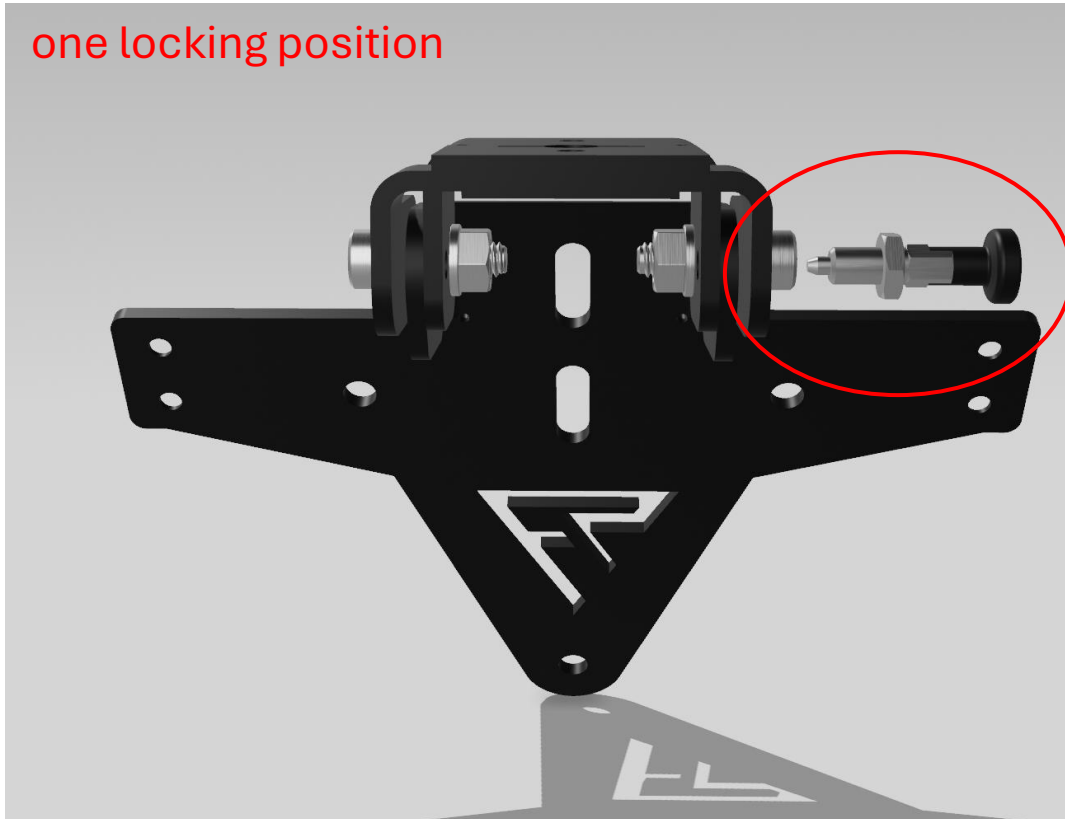
Tighten the included screws to approximately 4 Nm.  
M6x20



## Foldable Holder V2.1

Assembly Instructions

### Step 7

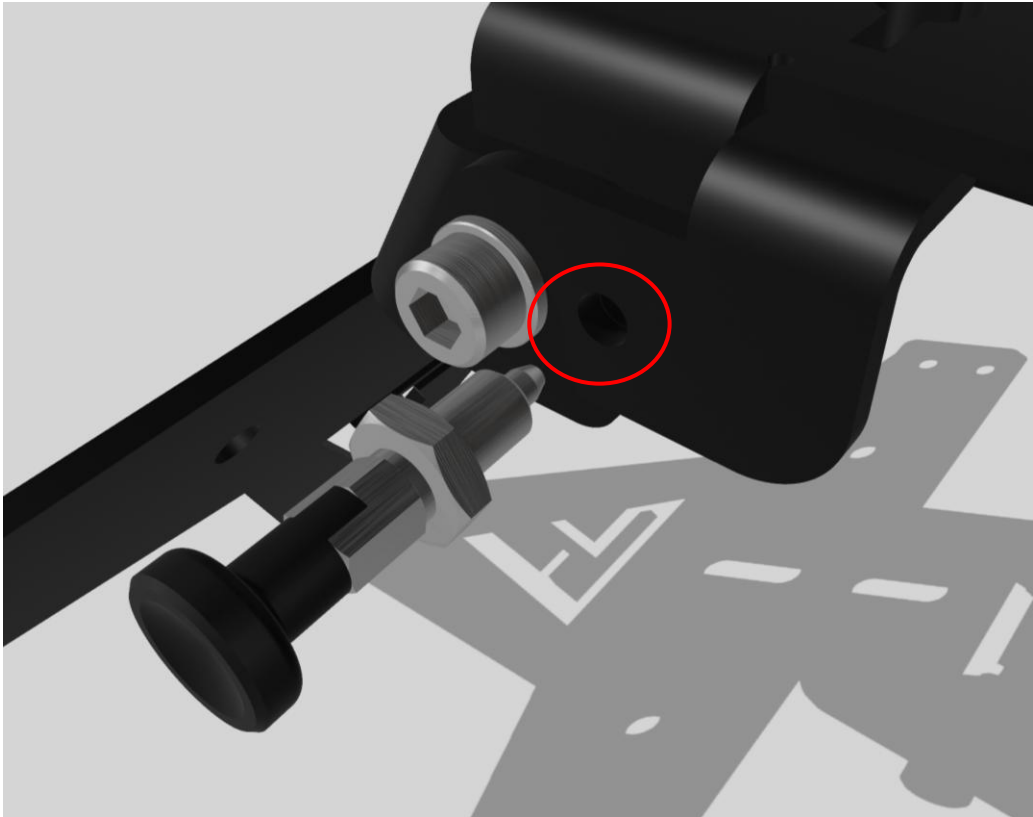


Mount the locking pin on the right side for one locking position,  
or on the other side for two locking positions.

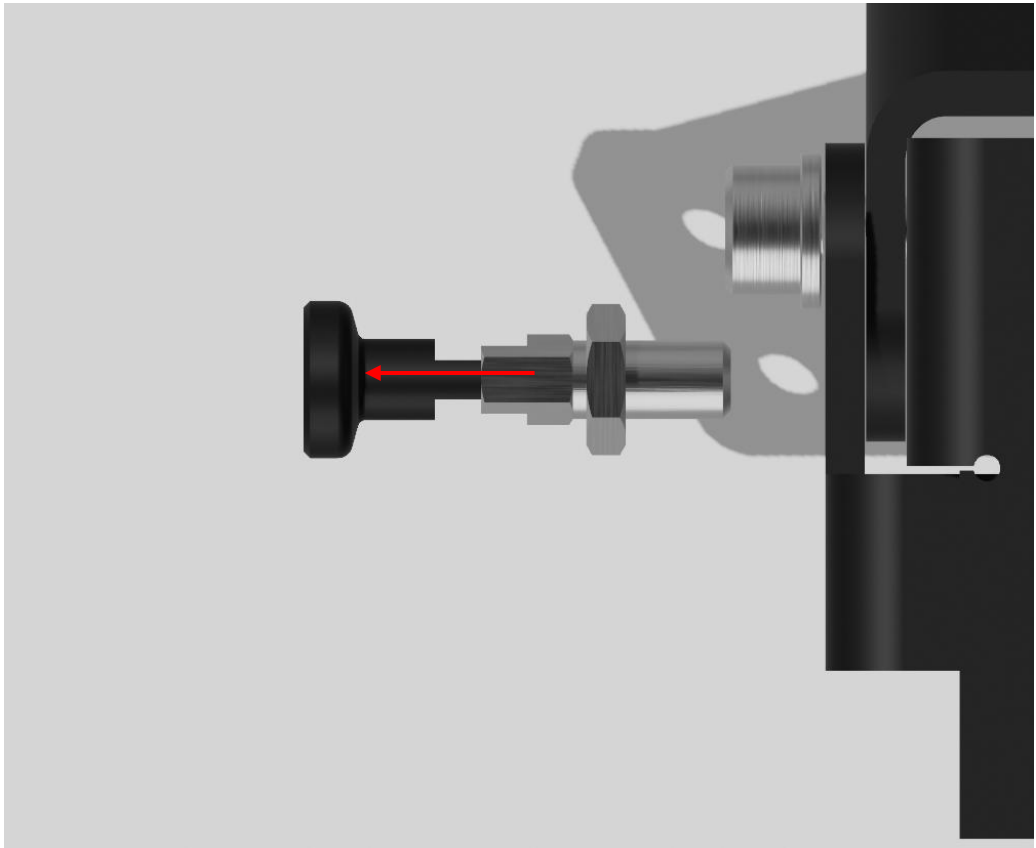


**Foldable Holder V2.1**  
Assembly Instructions

Step 8



Step 9



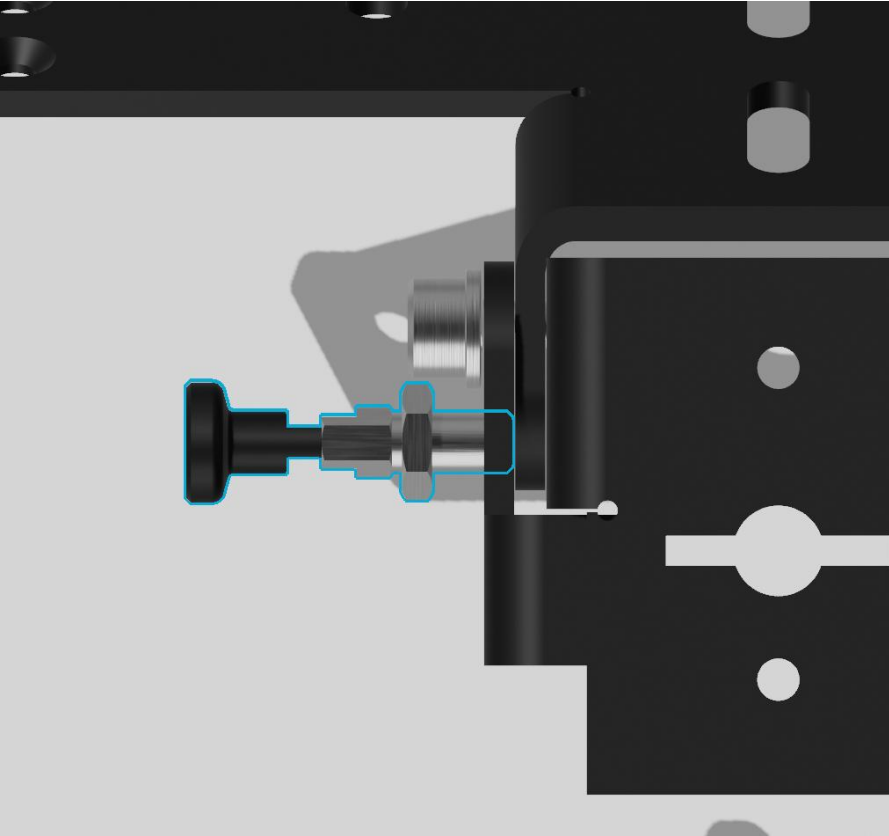
Apply a medium-strength threadlocker (e.g., Loctite) to the locking pin and pre-load it before screwing it in.



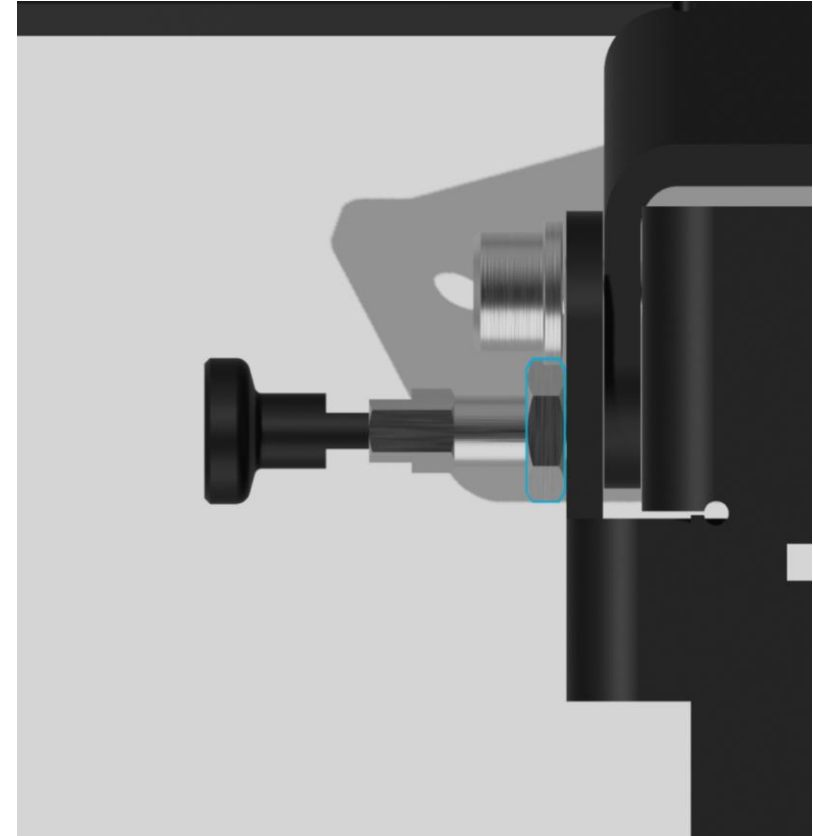
## Foldable Holder V2.1

Assembly Instructions

### Step 10



### Step 11



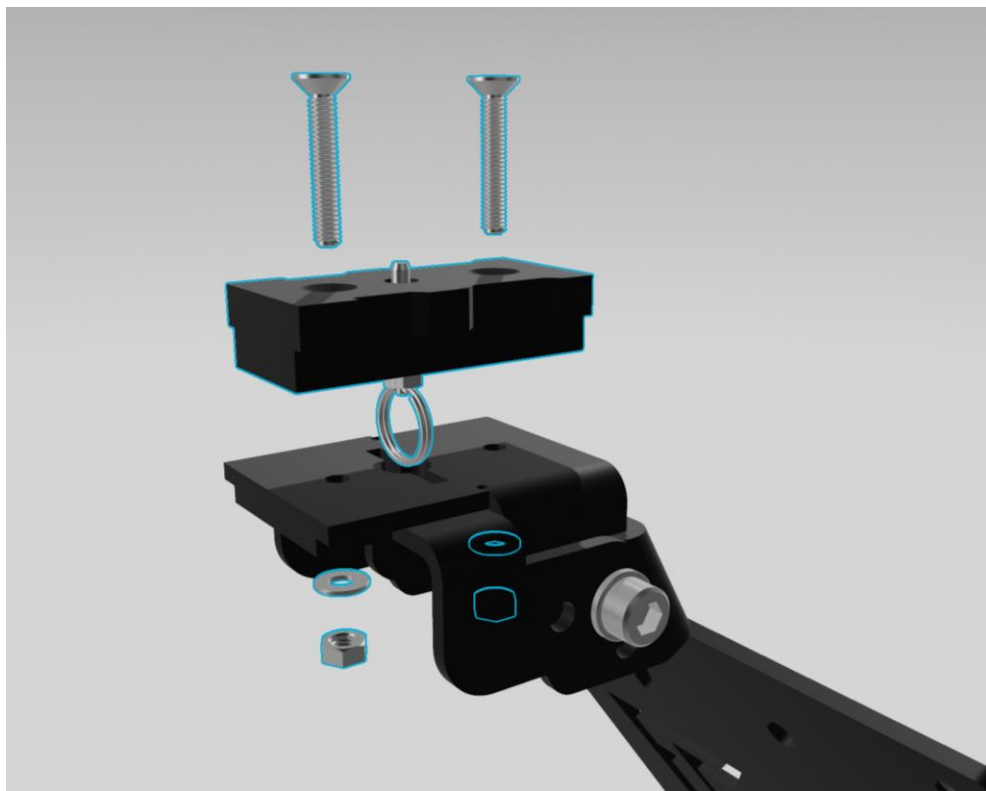
**Important:** Only screw the pin into the outermost part of the holder and hand-tighten it with the nut!



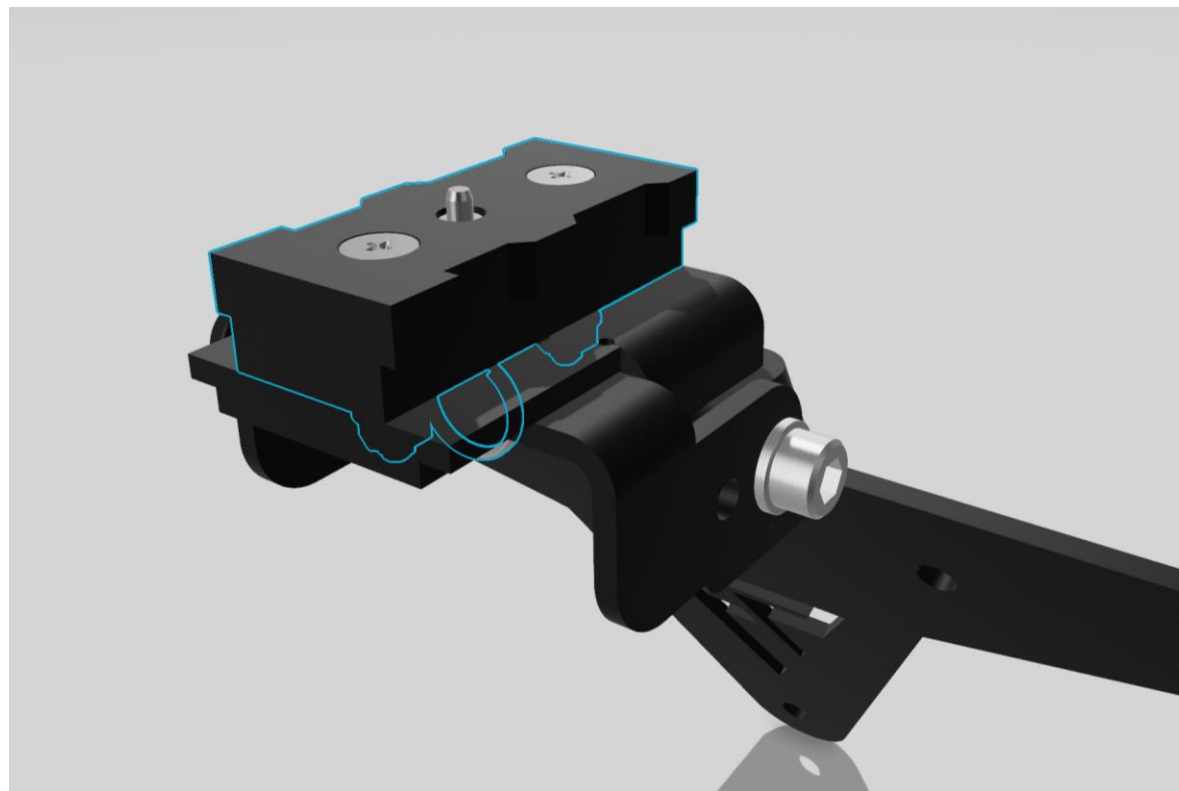
## Foldable Holder V2.1

Assembly Instructions

### Step 12



### Step 13



Install the switch.





## Foldable Holder V2.1

Assembly Instructions

Done!

