



# **Foldable Holder V2**

## Assembly Instructions





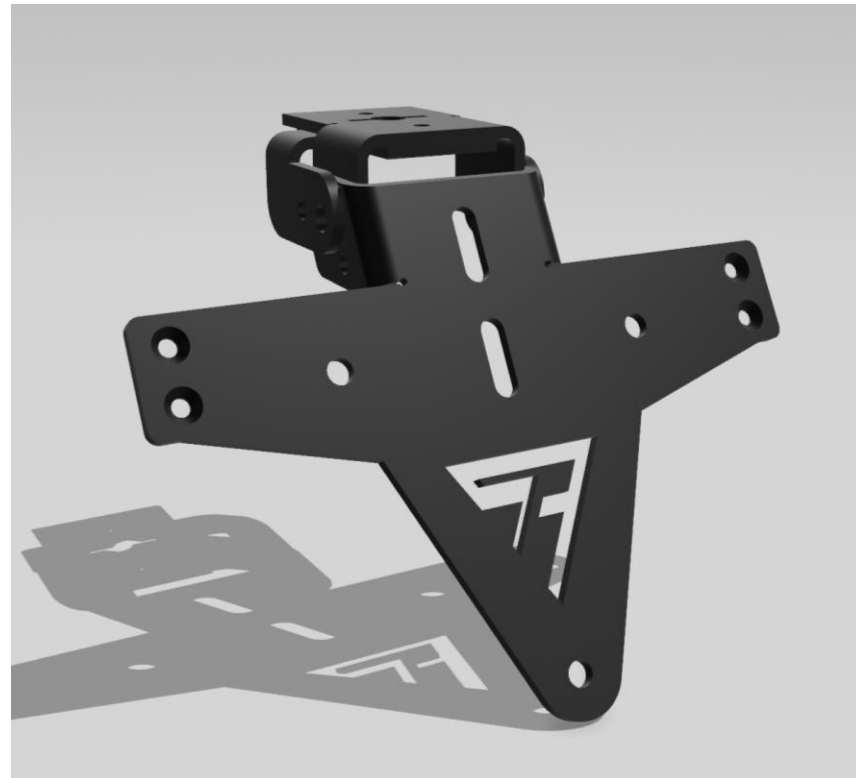
## Foldable Holder V2

Assembly Instructions

### Step 1



### Step 2

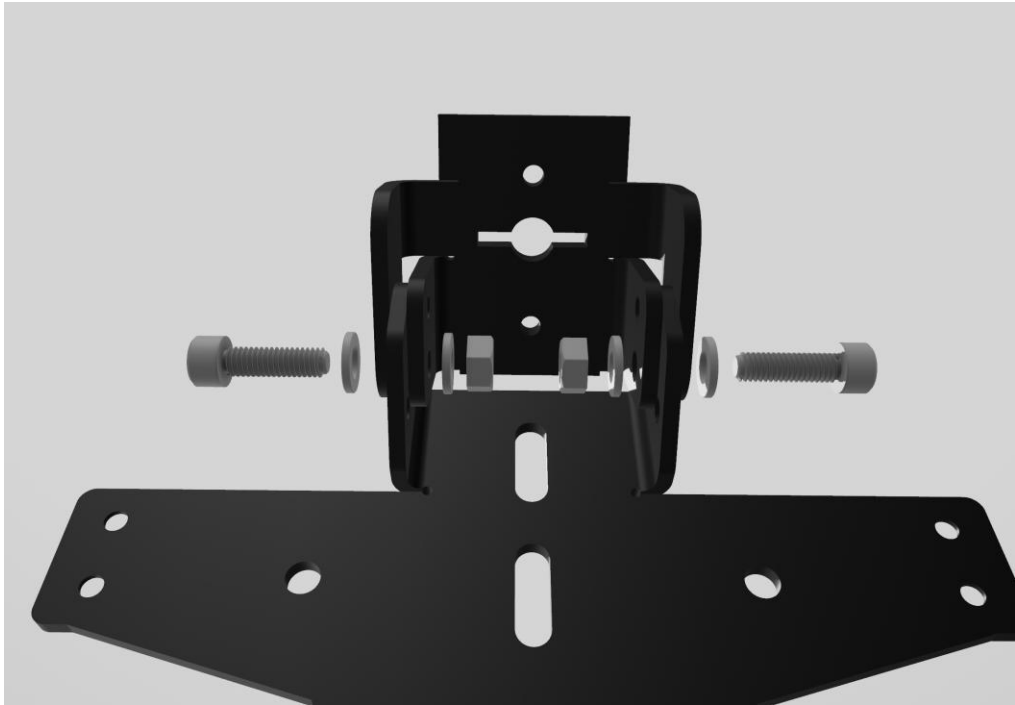


Insert the three parts of the Foldable Holder together in the correct order.

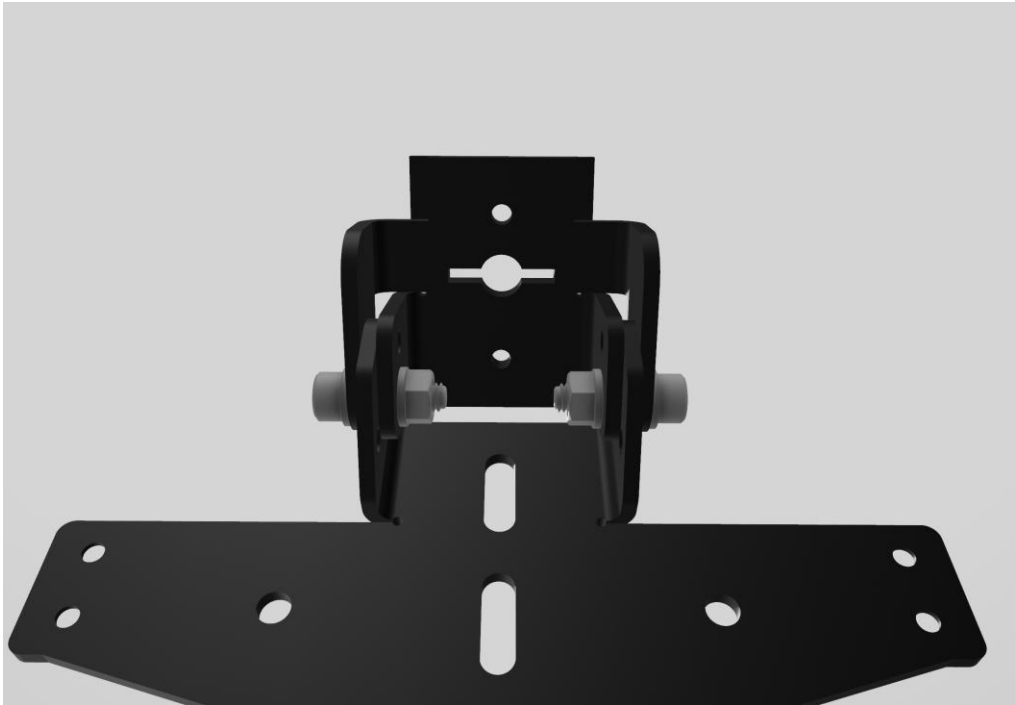


**Foldable Holder V2**  
Assembly Instructions

Step 3



Step 4



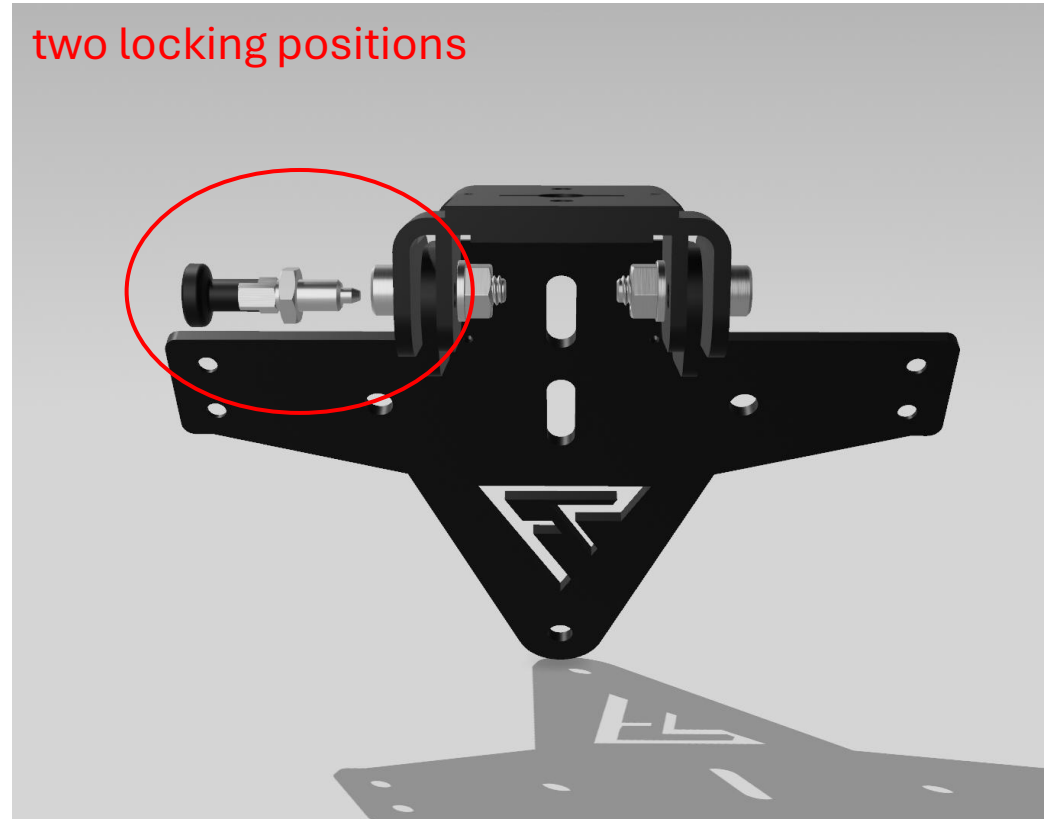
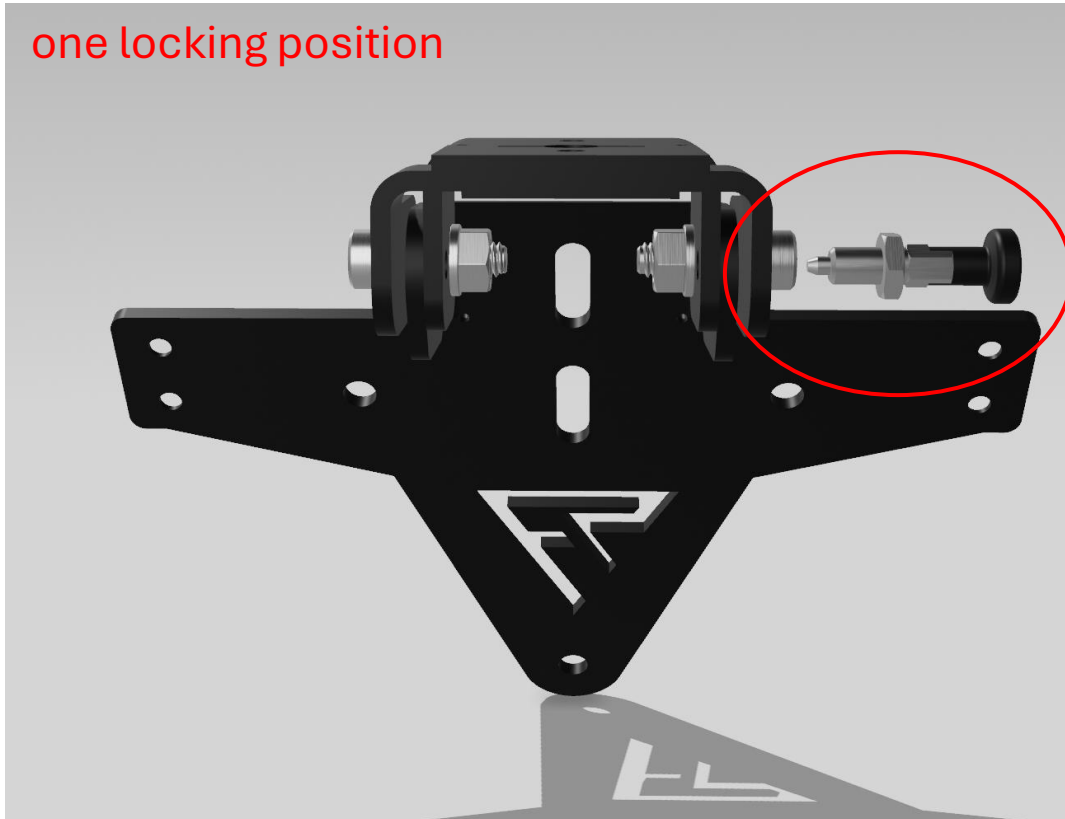
Tighten the included screws to approximately 4 Nm.



## Foldable Holder V2

Assembly Instructions

### Step 5



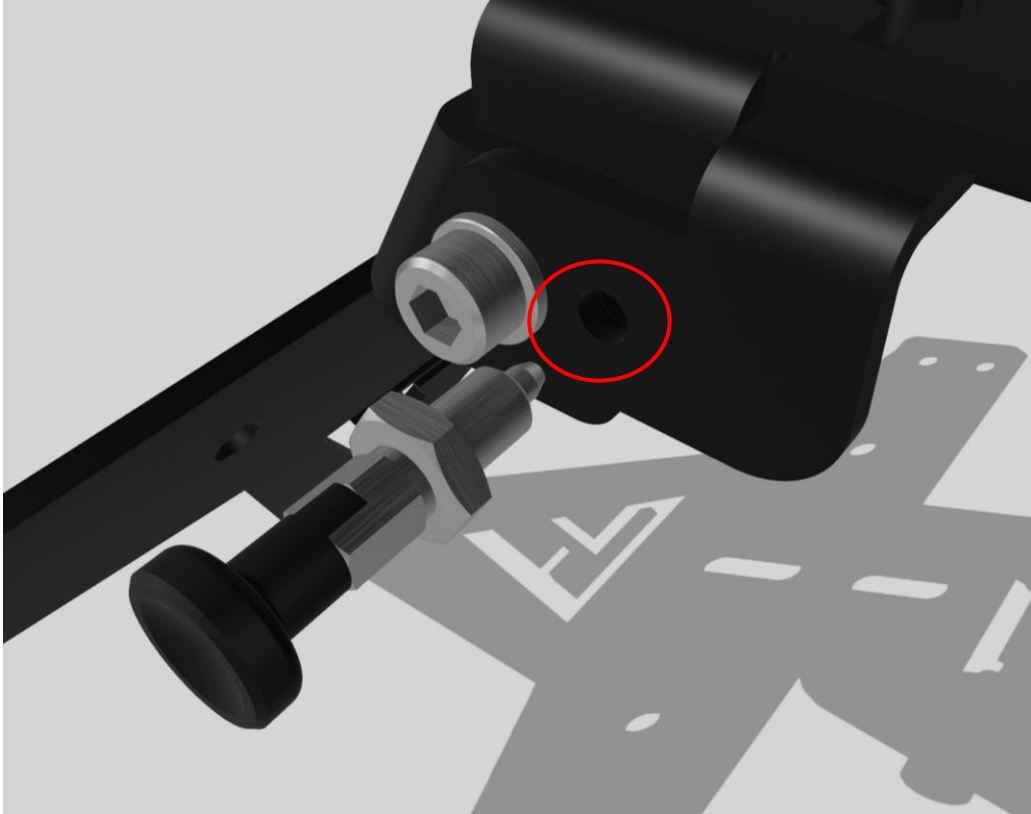
Mount the locking pin on the right side for one locking position,  
or on the other side for two locking positions.



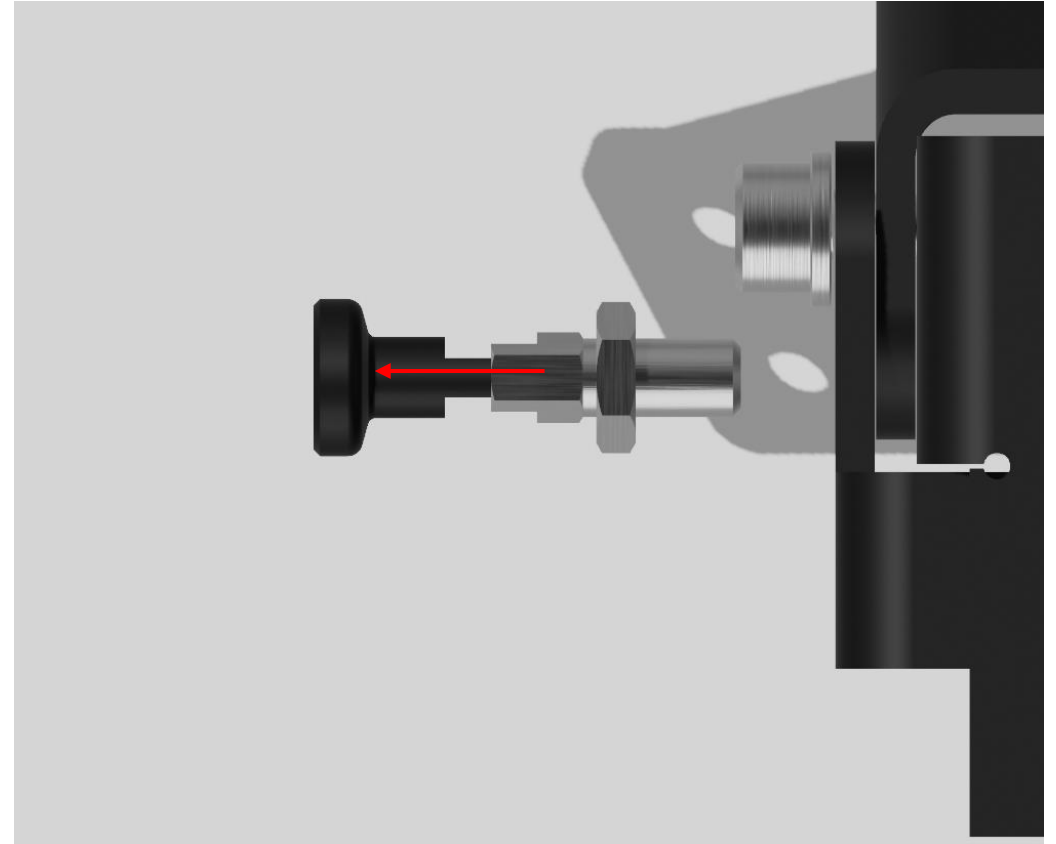
## Foldable Holder V2

Assembly Instructions

### Step 6



### Step 7



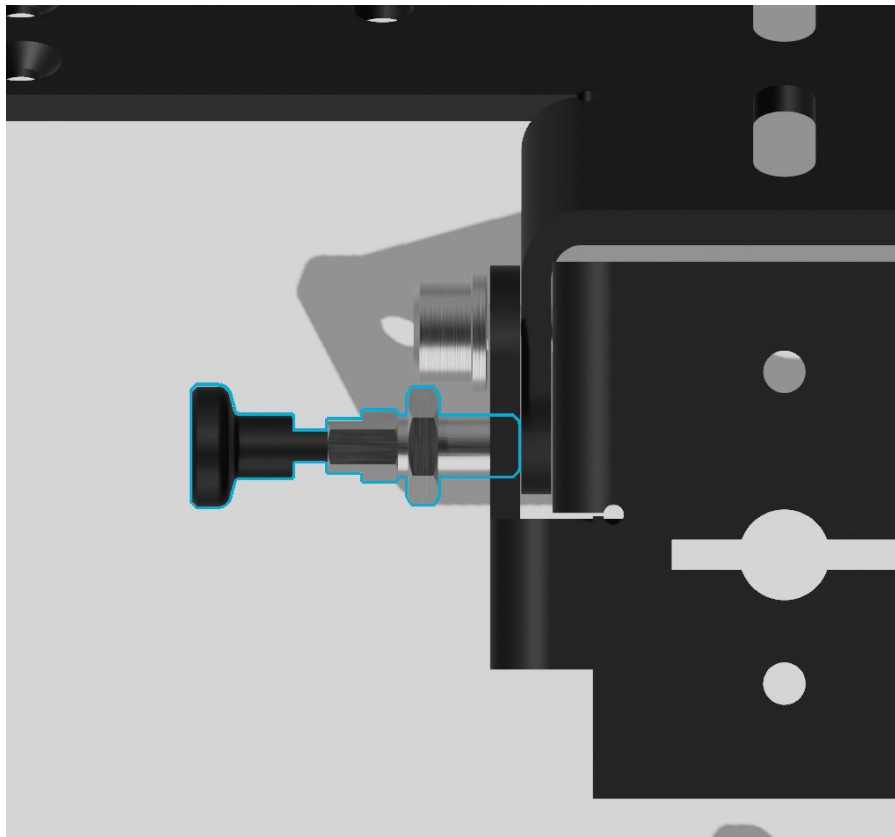
Apply a medium-strength threadlocker (e.g., Loctite) to the locking pin and pre-load it before screwing it in.



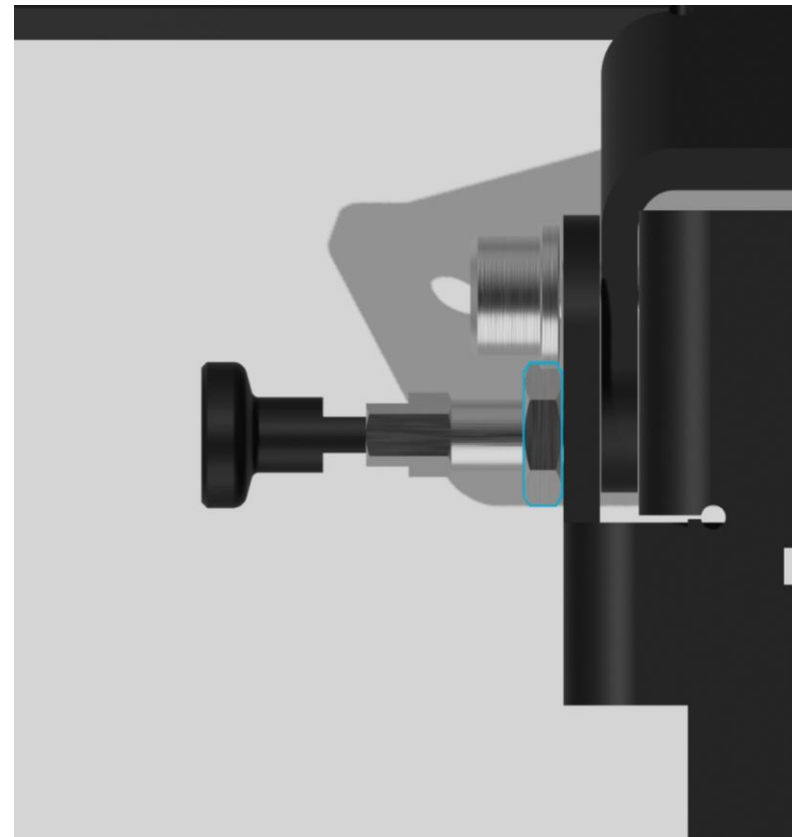
## Foldable Holder V2

Assembly Instructions

### Step 8



### Step 9



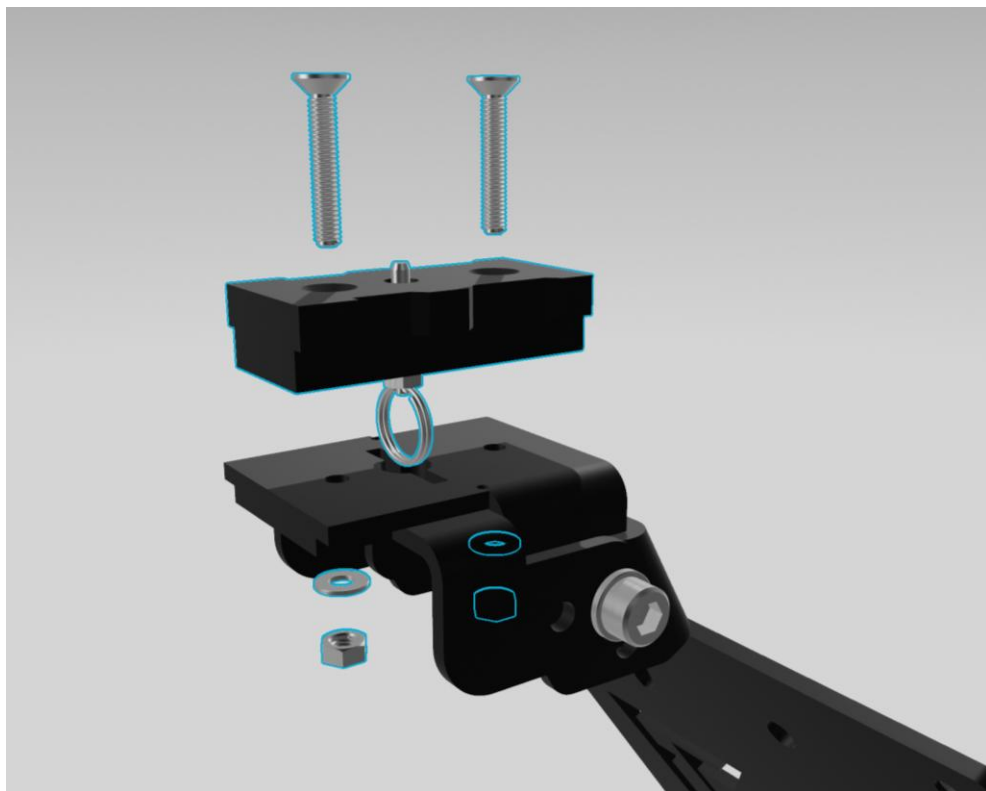
**Important:** Only screw the pin into the outermost part of the holder and hand-tighten it with the nut!



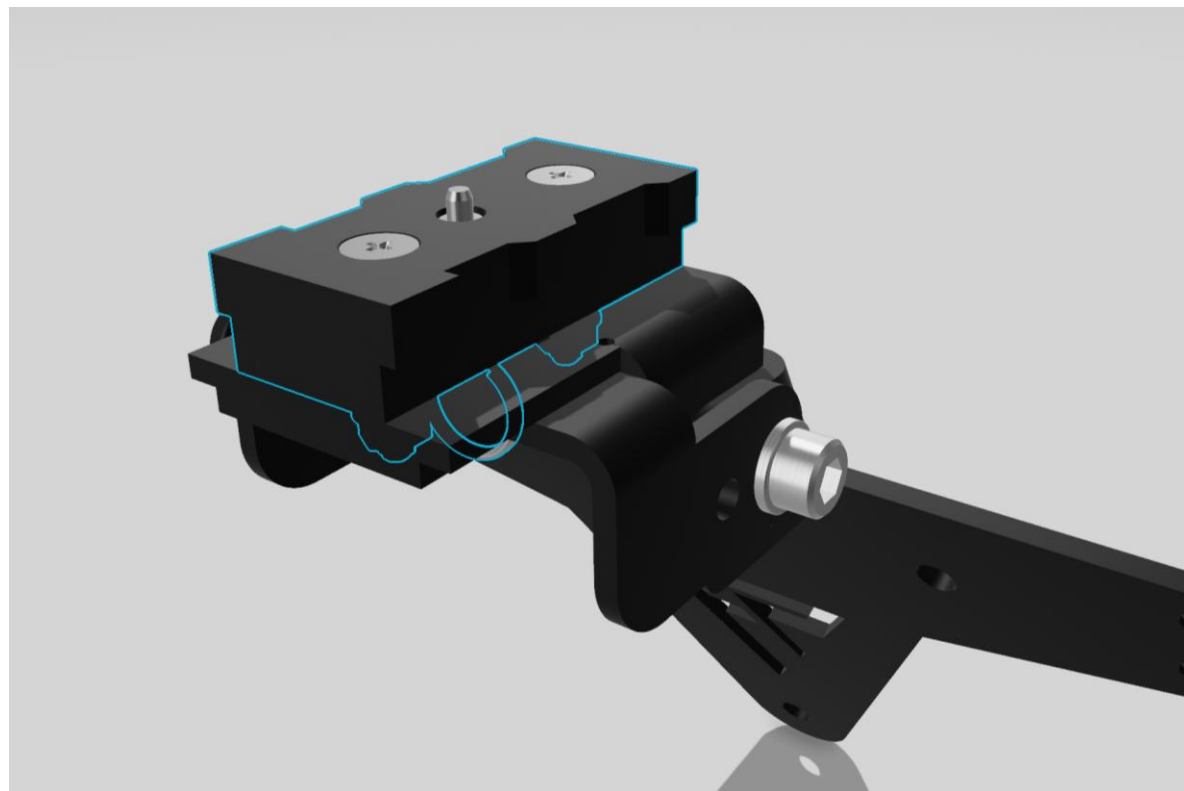
## Foldable Holder V2

Assembly Instructions

### Step 10



### Step 11



Install the switch.



## Foldable Holder V2

Assembly Instructions

Done!

